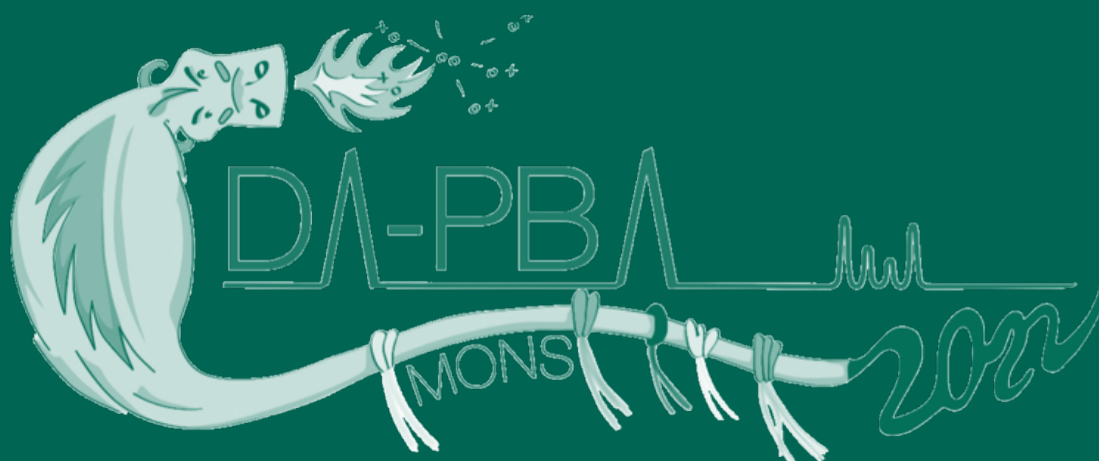


Guide of the Congress Participant

**12th International Symposium on  
Drug Analysis  
&  
32nd International Symposium on  
Pharmaceutical and  
Biomedical Analysis**

**From 11th to 14th September 2022  
University of Mons (Belgium)**



# SYMPOSIUM

The Organising Committee of the International Symposium DA-PBA 2022 are pleased to announce their 2022 edition, which will take place in Mons, Belgium, from 11<sup>th</sup> to 14<sup>th</sup> September, 2022. This symposium will be a joint meeting of two distinguished series: the 12th International Symposium on Drug Analysis and the 32nd International Symposium on Pharmaceutical and Biomedical Analysis. It follows a series of successful symposia organized by the Belgian Society of Pharmaceutical Sciences (BSPS) in Belgium (Brussels 1983, Brussels 1986, Antwerp 1989, Liège 1992, Leuven 1995, Brussels 1998, Brugge 2002, Namur 2006, Antwerp 2010, Liège 2014, Leuven 2018.) and brings together leading scientists from all over the world in the area of fundamental and applied pharmaceutical analysis.

DA-PBA 2022 will cover all aspects of pharmaceutical and biomedical analysis.

## Topics of interest

1. Affinity and bioactivity (ligand binding analytics)
2. Biomedical and diagnostic applications (including biomarkers, biosensors, point of care analysis and in vitro diagnostic)
3. Biopharmaceuticals and Advanced Therapy Medicinal Products (bioanalysis, metabolism, etc.)
4. Drug discovery and development (including MS and imaging in ADME studies)
5. Omics for personalized medicine (microbiome, genomics, metabolomics and proteomics, peptidomics, lipidomics, venomomics, etc.)
6. Micro and nanotools in pharmaceutical analysis (SERS, nanofluidics, nanomagnets, single cell analysis, etc.)
7. Natural product pharmaceuticals
8. Pharmaceutical regulatory quality (including novel guidelines, counterfeiting, vaccines, etc)
9. Pharmaceutical processing (multivariate approaches, fingerprinting, chemometrics, QbD)
10. Sampling and sample preparation (including non-invasive analytical techniques)
11. Biophysical and biological quality control techniques for medicines
12. Environmental fate and ecological characteristics of drugs
13. Novel methodologies for drug analysis

# PLENARY



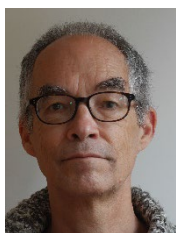
D. Guilleme (University of Geneva - Switzerland)

*Protein biopharmaceuticals analysis with advanced chromatography and mass spectrometry approaches*



S. Pedersen-Bjergaard (University of Oslo - Norway)

*Microextraction using artificial liquid membranes and electrical fields*



G. Kersten (Leiden/Amsterdam Center for Drug Research – The Netherlands)

*Vaccine characterization: from black box to well-defined biologics*



U. Holzgrabe (Julius-Maximilians-Universität Würzburg - Germany)

*Juggling analytes, column chemistry and charged aerosol detection - HPLC analysis of weak chromophore drugs*



H. Watzig (Technische Universität Braunschweig - Germany)

*Biomolecules and their physicochemical properties: charge interactions, CIEF and affinity CE*



Ilona Reischl (EMA CAT vice-chair - Austria)

*The regulatory perspective on ATMP development*

# KEYNOTE



Kelly Zhang (Genentech Incorporated - USA)

*Automated high-throughput oligonucleotide-lipid nanoparticle preparation and analytical characterization*



Ann Van Eeckhaut (VUB - Belgium)

*Peptide quantification at the picomolar level in volume-limited biological samples: obstacles to tackle*



Janusz Pawliszyn (University of Waterloo - Canada)

*Rapid screening by directly coupling sampling/sample preparation devices to mass spectrometry*



Péter Horvatovich (University of Groningen – The Netherlands)

*Importance of data pre-processing in accurate drug distribution profiling with LC-MS/MS and mass spectrometry imaging*



Luiz Carlos Klein Junior (Universidade do Vale do Itajaí - Brazil)

*The use of chemometrics to study natural products*



Rawi Ramautar (Leiden University – The Netherlands)

*Advances and Utility of Capillary Electrophoresis-Mass Spectrometry in Micro-Metabolomics*



Caroline West (Université d'Orléans - France)

*Interest of unified chromatography (UC) to analyze polar biomolecules in pharmaceutical products*



Sibel Özkan (Ankara U. - Turkey)

*Electroanalytical Carbon Based Nanosensors: Their potential use in the life sciences and clinical medicine*



Myriam Taverna (Université Paris-Saclay - France)

*Miniaturized strategies for Glycosylation analysis of Biopharmaceuticals and disease Biomarkers*



Kenji Hamase (Kyushu University - Japan)

*Multi-dimensional HPLC analysis of chiral amino acids in complicated matrices including clinical, food and extraterrestrial samples*



Mario Tevis (European Monitoring Center for Emerging Doping Agents - Germany)

*Chromatographic-mass spectrometric approaches in sports drug testing - challenges and advances*

# COMMITTEES

## International Scientific Committee

A. VAN SCHEPDAEL (KU Leuven, Belgium) | Chair

C. BARBAS (CEU University, Spain)

R. BAUER (IPW, Austria)

C. BERTUCCI (University of Bologna, Italy)

R. BISCHOFF (University of Groningen, the Netherlands)

Q. CASS (Federal University of São Carlos, Brazil)

B. CHANKVETADZE (Tbilisi State University, Georgia)

J. CROMMEN (University of Liège, Belgium)

A. DELOBEL (Quality Assistance, Belgium)

M. FILLET (University of Liege, Belgium)

P.R. HADDAD (University of Tasmania, Australia)

J. HAGINAKA (Mukogawa Women's University, Japan)

U. HOLZGRABE (University of Wuerzburg, Germany)

V. IOFFE (Teva, Israel)

Z. JIANG (Jinan University, China)

J.-M. KAUFFMANN (Université Libre de Bruxelles, Belgium)

G. MASSOLINI (University of Pavia, Italy)

R. MOADDEL (National Institute on Aging, United States)

V. PICHON (University Paris Sorbonne, P. and M. Curie, Paris, France)

S. A. OZKAN (Ankara University, Turkey)

K. SANDRA (RIC Group, Belgium)

G. SOMSEN (Vrije Universiteit Amsterdam, the Netherlands)

Y. VANDER HEYDEN (Vrije Universiteit Brussel, Belgium)

J.-L. VEUTHEY (University of Geneva, Switzerland)

H. WÄTZIG (Institute for Medicinal and Pharmaceutical Chemistry, Germany)

G. XU (Dalian Institute of Chemical Physics, China)

K. ZHANG (Genentech, USA)

S. RUDAZ (University of Geneva, Switzerland)

K HAMASE (Kyushu University, Japan)

## Local Organizing Committee

B. BLANKERT (University of Mons)

C. DELPORTE (Université Libre de Bruxelles)

K. DE BRAEKELEER (Université Libre de Bruxelles)

B. DE SPIEGELEER (University of Ghent)

M. FILLET (University of Liège)

G. MUCCIOLI (University of Louvain)

J. SAEVELS (Association of Pharmacists Belgium)

A. VAN EECKHAUT (Vrije Universiteit Brussel)

A. VAN SCHEPDAEL (KU Leuven)

S. HAMBYE (University of Mons | Exothera)

P. VAN ANTWERPEN (Université Libre de Bruxelles)

A. NACHTERGAELE (University of Mons)

A. CECCATO (Mithra Pharmaceuticals)

# PARTNERS



# PROVISIONAL PROGRAMME

**Sunday 4:00 PM** – Registration | Opening ceremony | Plenary lectures, followed by a welcome reception

**Monday** – Registration | Plenary session | Keynote session | Oral presentations | Poster sessions

**Tuesday** – Plenary session | Keynote session | Oral presentations | Poster sessions | Symposium dinner

**Wednesday** – Plenary session | Keynote session | Oral presentations | Poster sessions | Programme adjourns around 1:00 PM



# PRACTICAL INFORMATION

## Mons



Mons, the administrative centre of the Hainaut province, is located in a dynamic region situated at the heart of Europe, between Amsterdam and Paris on the one hand and Cologne and London on the other.

Its particularly rich and varied heritage contains 4 cultural masterpieces of humanity recognised by the UNESCO World Heritage Committee.

The Belfry in Mons, which was recognized as a World Heritage site in 1999, was built between 1661 and 1672 by Louis Ledoux and Vincent Anthony. While being the only baroque Belfry in Belgium as well as having recognition from UNESCO, it possesses a 49-bell carillon. This symbol, overlooking Mons, offers a splendid view of the rooftops of the city and of the former heaps which trace back to its mining history.

The Neolithic Flint Mines at Spiennes was listed among the UNESCO World Heritage sites in 2000 and is one of the oldest and largest flint extraction sites in Europe. Located 6 km from Mons, this archaeological site covers 100 hectares. You will be able to discover the inventions and pruning techniques developed 6000 years ago by man, which today mark a major step in the cultural and technological development of mankind.

The traditional festival in Mons, known as the 'Doudou', was recognised in 2005 by UNESCO. The 'Doudou', which comprised a Procession, the ascent of the Golden Chariot, and the fight, known as the 'Lumeçon', is a lively tradition celebrating St Waudru, the founder of the city and St George's battle against the Dragon, the symbol of evil.

Grand-Hornu, listed in 2012 by UNESCO as World Heritage of Humanity, is an example of the idealistic

architecture characterizing the beginning of the European industrial era. As a symbol of its industrial past, the Grand-Hornu was a former mining complex which included the wells and housing of miners, and all administrative institutions necessary for the running of a community. Today it is a Museum of Contemporary Art (MAC's), in the French-speaking Community of Belgium.

Mons and its surrounding area is also replete with a number of museums and impressive sites such as the Collegiate Church of Saint Waudru, the Town Hall, the Mayor's Garden, the Fine Arts Museum (BAM), the PASS (Park of Scientific Adventures).

In the evening, Mons comes alive with its many bistros and quality restaurants ready to ravish the finest of palates and invite you to discover Belgian cuisine. The warm atmosphere of the bars and cafes in Mons will bring the perfect end to your sensational day.

[www.visitmons.be](http://www.visitmons.be)



# Venue



Mons is situated between Paris and Brussels on the E19 motorway, exit 24.



Mons station — The new station created by Santiago Calatrava is currently under construction.

Two trains connect Brussels to Mons every hour.

You can take a TEC bus every 30 minutes between Brussels South Airport and the main Charleroi train station (Charleroi-Sud) where you can take a direct train to Mons.

The campus Plaine de Nimy is only a 15 minute-walk from the railway station.



Brussels South Airport, located in Charleroi, is 30 minutes from Mons by car : [www.charleroi-airport.com](http://www.charleroi-airport.com)

Brussels Airport, the country's main international airport, is only 50 minutes from Mons : [www.brusselsairport.be](http://www.brusselsairport.be)



- Navette Connection  
[www.navette-connection.be](http://www.navette-connection.be)

- Navettes Devos  
<http://navette-devos.be>  
0032 485 150 120

- Taxis Milie  
<https://www.taxis-milie.be>  
0032 477 937 194

- Taxi Speed  
[www.taxispeed.be](http://www.taxispeed.be)  
0032 474 779 777

- Taxis Top  
[www.taxi-top.be](http://www.taxi-top.be)  
0032 495 209 209

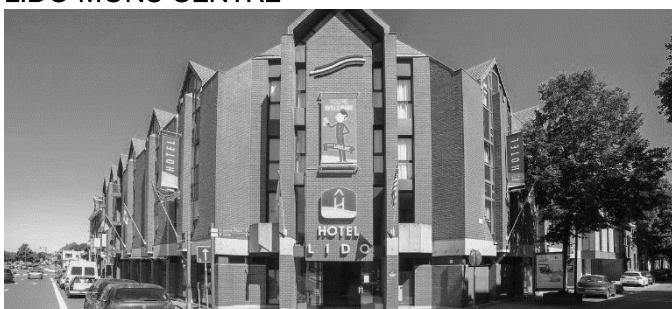
- Taxi Willy  
<http://taxiswillymons.be>  
0032 65 319 808



The fee does not include accommodation and so you have to organize your own accommodation

We advise you to **book your hotel as soon as possible.**

#### LIDO MONS CENTRE \*\*\*\*



rue des Arbalestiers, 112 - 7000 Mons

[www.lido.be](http://www.lido.be)

[info@lido.be](mailto:info@lido.be)

00032 65 327 800

25 rooms pre-booked until **11/08/2022**

Room : 112 € (single) – 122€ (double)

(including breakfast & tourist tax)

Book ***by email*** and use the code ***DA-PBA2022 – BE22001491*** for this reduced rate

#### MARTIN'S DREAM! \*\*\*\*



rue de la Grande Triperie, 17 - 7000 Mons

[www.dream-mons.be](http://www.dream-mons.be)

[info@dream-mons.be](mailto:info@dream-mons.be)

0032 65 329 720

Rooms pre-booked until **11/08/2022**

Room : 132,18 € (single) – 145,36€ (double)

(including breakfast & tourist tax)

Book ***by email*** and use the code ***UMons0922 (DA-PBA2022)*** for this reduced rate

#### IBIS MONS CENTRE GARE \*\*\*



boulevard Charles-Quint, 27bis - 7000 Mons

[www.ibis.com](http://www.ibis.com)

[ibismons@monshotels.be](mailto:ibismons@monshotels.be)

0032 65 847 440

20 rooms pre-booked until **11/08/2022**

Room : 95 € (single) – 108€ (double)

(including breakfast & tourist tax)

Book ***by email*** and use the code ***DA-PBA2022 – Colloque UMONS*** for this reduced rate

### VAN DER VALK \*\*\*\*



avenue Mélina Mercouri, 7 - 7000 Mons

[www.hotelmons.eu](http://www.hotelmons.eu)

[info@hotelmons.eu](mailto:info@hotelmons.eu)

0032 65 390 207

Book *by email* and use the code **GF8879** for 10% discount

### COMPAGNONS11



rue des Compagnons 11 - 7000 Mons

[www.compagnons11.be](http://www.compagnons11.be)

[info@compagnons11.be](mailto:info@compagnons11.be)

0032 499 997 660

2 rooms pre-booked until **11/08/2022**

Use the code « **DA-PBA2022 – Colloque UMONS** » for this booking

### ST JAMES \*\*\*



place de Flandre, 8 – 7000 Mons

[www.hotelstjames.be](http://www.hotelstjames.be)

[hotelstjames@hotmail.com](mailto:hotelstjames@hotmail.com)

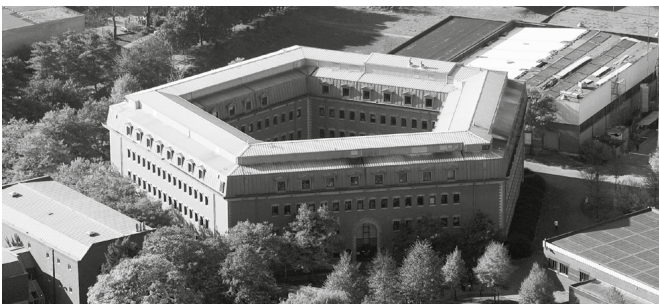
00032 65 724 824

19 rooms pre-booked until 11/08/2022

Room : 88,00€ (single) (including breakfast & tourist tax)

Book *by email* and use the code **DA-PBA2022 - UMONS** for this reduced rate

### SERVICE LOGEMENTS DE L'UMONS



Accommodation is possible at the University Halls of Residence.

[cites@umons.ac.be](mailto:cites@umons.ac.be)

0032 65 55 20 37

0032 65 37 37 07



## Deadlines

Opening registration	01/01/2022
Opening submissions	01/03/2022
Deadline for abstract submission for oral communications	01/05/2022
Deadline for abstract submission for posters	31/05/2022
Notification of acceptance for oral communications	31/05/2022
Notification of acceptance for poster presenters	15/06/2022
Deadline for early bird registration	17/06/2022
Deadline for author registration	01/07/2022
Deadline for registration	15/08/2022



## Call for papers

<https://easychair.org/conferences/?conf=dapba2022>



## Registration

Registration fees include full access to the DA-PBA Symposium, all symposium materials, coffee breaks and lunches during the symposium and access to the welcome reception on Sunday 11/09/22.

Only participants who have paid their registration fees will be allowed in.

Participants are requested to wear their identification tags during the whole event.

Type of registration	Early Bird ( <i>until 17/06/22</i> )	Regular fee
Full Academic	500€	650€
Full Industry	700€	800€
Postdoc*	400€	500€
Students*	250€	350€
Accompanying person	150€	200€
Gala dinner	40€	40€

\*Proof of student/PhD status will be checked upon arrival for registration. The document provided can be a copy of your student card including the mentioning of the academic year, a certificate of enrolment, or a letter signed by your supervisor

### Online registration form

<https://extension.umons.ac.be/evenement-73-da-pba2022.html>

### Invoice

You will receive a confirmation of your registration with a link to your invoice by e-mail. Please do not request an invoice if you have already paid by credit card or bank transfer. The invoice will not be modified and will only be issued once.

## Cancellation Policy

Full refund, minus bank charges, until 15/08/2022. No refund after this date. Refund by bank transfer.

Cancellations will be accepted in writing only ([da-pba22@umons.ac.be](mailto:da-pba22@umons.ac.be)) and must be received by the stated cancellation deadline. All refund requests must be made by the attendee or credit card holder. Refund requests must include the name of the attendee, the bank account number used during your transaction and/or the transaction number.

## Payment methods

Payment is possible by credit card or bank transfer. Please select the option you prefer in the last step of the registration process. If you want to pay by credit card, a direct link to a Ogone secured payment page will be provided. For payment by bank transfer, payment information will appear on your invoice. All banking charges are at your expenses



## Social event

Coffee-breaks are planned twice a day.

Lunches will be served at the university restaurant.

There are no shops on the campus, but it is not far from the city centre.

The gala dinner (not included in the registration fee) will take place at the Faculty Club (Maison de la Réunion – 5 rue de la Réunion à 7000 Mons), on Tuesday 13/09/22



## Location

UMONS - Campus Plaine de Nimy – Les Grands Amphis - Chemin du Champ de Mars 8, 7000 Mons

Google map:

<https://www.google.com/maps/d/edit?mid=1cNNEkguyGIMptjzg7itubmdD5XxN8ipg&usp=sharing>



## Wi-fi

UMONS-EVENT - welcome-to-umons